



SL-S/SS SERIES STRIPLIGHT STEEL OR STAINLESS STEEL

FEATURES & SPECIFICATIONS:

Construction

- Body constructed of heavy-duty 16 Ga pre-painted white steel
- Optional 304 stainless steel construction
- Fixture ships fully assembled
- Available in 2', 4' or 8' lengths

Electrical System

- Ballasts are UL listed (UL 935) and CSA certified, Class P, high power factor
- Instant start electronic ballasts are supplied standard with universal voltage (120-277V, $\leq 10\%$ THD) operating at 50/60HZ
- Cold weather operation to -20°C (T8HO & T12HO) or 0°C (T8)
- Cold weather operation to 0°C with optional battery pack

Finish

- Steel unit finish is high gloss, baked white enamel
- Stainless steel unit is unfinished
- Colors optional

Installation

- Individual or row mounting. Surface or suspended.

LISTINGS:

- UL/CUL Listed (UL 1598)
- Suitable for damp locations

APPLICATIONS:

- Retail
- Light industrial areas
- General lighting

OPTIONS:

- Stainless steel construction
- Wire guard
- Fusing
- In-line wiring
- Reflectors (Symmetric or asymmetric)
- Emergency battery
- Special colors

SHIPPING WEIGHT:

- 8 lbs Steel
- 10 lbs Stainless Steel

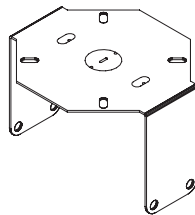
SL-S/SS SERIES

ORDERING INFORMATION

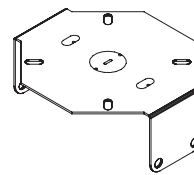
<p>SERIES/LENGTH</p> <div style="border: 1px solid black; padding: 5px; width: fit-content; margin: 0 auto;">SL4</div> <p>SERIES/LENGTH SL2 = 2' SL4 = 4' SL8 = 8'</p> <p>MATERIAL S = STEEL SS = STAINLESS STEEL</p> <p># OF LAMPS 1 = 1 LAMP 2 = 2 LAMPS 4* = 4 LAMPS * (8', 32W T8 ONLY)</p>	<p>MATERIAL</p> <div style="border: 1px solid black; padding: 5px; width: fit-content; margin: 0 auto;">SS</div>	<p># OF LAMPS</p> <div style="border: 1px solid black; padding: 5px; width: fit-content; margin: 0 auto;">2</div>	<p>LAMP TYPE</p> <div style="border: 1px solid black; padding: 5px; width: fit-content; margin: 0 auto;">32</div> <p>LAMP TYPE 14 = 2', 14W T5 17 = 2', 17W T8 24 = 2', 24W T5HO 28 = 4', 28W T5 32 = 4', OR 8', 32W T8 48 = 4', 48W T8HO 54 = 4', 54W T5HO 59 = 8', 59W T8 86 = 8', 86W T8HO</p>	<p>VOLTAGE</p> <div style="border: 1px solid black; padding: 5px; width: fit-content; margin: 0 auto;">U</div> <p>VOLTAGE U = 1 or 2-LAMP, 120-277V, 50/60HZ (≤10% THD) 4U = 4-LAMP, 120-277, 50/60HZ (≤10% THD)</p>	<p>OPTIONS</p> <div style="border: 1px solid black; padding: 5px; width: fit-content; margin: 0 auto;">----</div> <p>OPTIONS WG2 = 2' WIREGUARD WG4 = 4' WIREGUARD, 2 REQUIRED FOR 8' AR = ASYMMETRIC REFLECTOR SR = SYMMETRIC REFLECTOR SB = SLOW BLOW FUSE FB = FAST BLOW FUSE IW = TANDEM IN-LINE WIRING (FOR ROW MOUNTING) EM3 = EMERGENCY BATTERY PACK (350-450 LUMENS) EM6 = EMERGENCY BATTERY PACK (600-700 LUMENS) EM11 = EMERGENCY BATTERY PACK (1100-1400 LUMENS)</p>
--	---	--	--	--	---

MOUNTING OPTIONS

**Mounting kits include two brackets (three for 8' units) and hardware

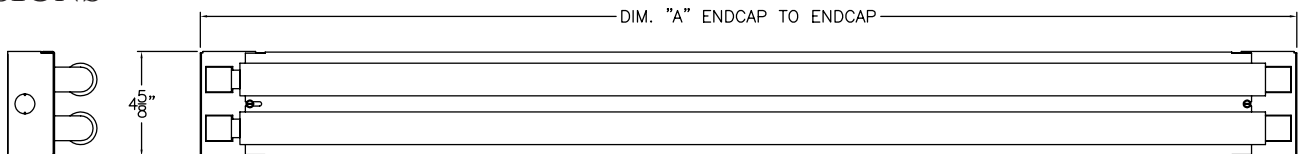


SB = 1 1/2" Spacer Bracket Kit



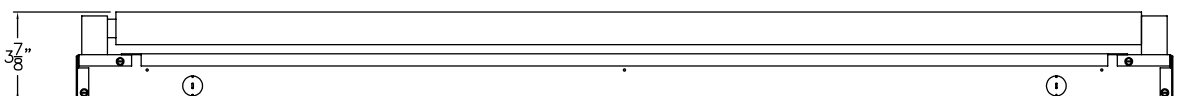
FMB = Flush Mount Bracket Kit

DIMENSIONS



STRIP LIGHT DIMENSIONS

SIZE	DIM "A"
2 FT	24 1/4 in.
4 FT	48 1/4 in.
8 FT	96 1/4 in.



INDATECH LIGHTING
 5910 WEST BY NORTHWEST #100
 HOUSTON, TX 77040

www.indatechlighting.com

713-937-3600 Phone
 866-563-2832 Phone
 713-937-3604 Fax