



FEATURES & SPECIFICATIONS:

Construction

- Heavy-duty extruded copper-free aluminum housing and door frame with cast aluminum ends
- External hardware is stainless steel to resist corrosion
- One-piece high temperature propylene gasket provides a water-tight seal between the door frame and housing
- Latching system allows tool-free access to lamp chamber (See inset below)
- 3/4" hubs supplied standard on both ends
- Capable of mounting from the top or sides of the fixture
- Standard finish is natural aluminum

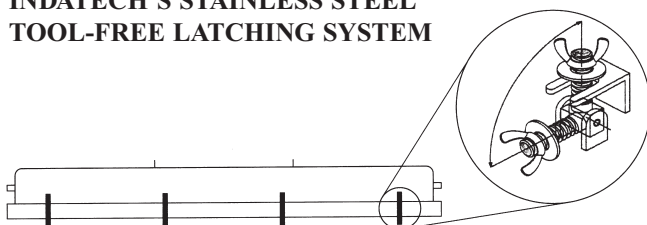
Optical System

- Impact resistant polycarbonate lens is standard, other lenses available
- High reflectance die formed pre-coated aluminum reflector

Electrical System

- Ballasts are UL listed (UL 935) and CSA certified, Class P, high power factor, Type 1 Outdoor, Type HL
- All electronic ballasts are universal voltage (120-277V, ≤10% THD) operating at 50/60HZ
- Cold weather operation to -20°C (T8HO & T12HO) or 0°C (T8)
- Cold weather operation to 0°C with optional battery pack
- Lamps are supplied standard on both 2' & 4' models

**INDATECH'S STAINLESS STEEL
TOOL-FREE LATCHING SYSTEM**



LISTINGS:

- UL/CUL Listed (UL 844)
Class I, Div. 2
Groups A, B, C & D
- UL Listed (UL 1598A)
Marine/Outdoor use
- IP 66

APPLICATIONS:

- Waste water treatment plants
- Shipyard facilities
- Pulp and paper mills
- Coastal marine areas
- Chemical plants
- Pharmaceutical plants
- Mining
- Cold storage
- Hazardous storage areas
- Corrosive environments

OPTIONS:

- Emergency battery
(1 or 2 lamps, 350-575 lumens)
- Fusing (Non-Marine)
- Wide variety of mounting options
- 4' Stainless steel safety cable

SHIPPING WEIGHT:

- 20 LBS

HML SERIES

ORDERING INFORMATION

SERIES/LENGTH	# OF LAMPS	LAMP TYPE	VOLTAGE	OPTIONS
HML4	2	32	U	----
SERIES/LENGTH HML2 = 2' HML4 = 4' # OF LAMPS 1 = 1 LAMP 2 = 2 LAMPS		LAMP TYPE 14 = 2', 14WT5 17 = 2', 17WT8 24H = 2', 24WT5HO 28 = 4', 28WT5 32 = 4', 32WT8 44H = 4', 44WT8HO 48H = 4', 60WT12HO 54H = 4', 54WT5HO	VOLTAGE U = 120-277 (10% THD)	OPTIONS EMH = EMERGENCY BATTERY PACK (4' ONLY) F = FUSING (NON-MARINE/FAST BLOW) SC4 = 4' STAINLESS STEEL SAFETY CABLE MB = MAGNETIC BALLAST (T12HO ONLY) LL = LESS LAMPS

SIDE MOUNT OPTIONS

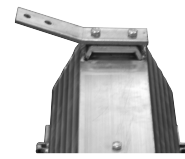
Mounting hardware is **not included with fixtures and must be ordered separately
 **Mounting kits include two brackets and hardware



SMBK = Straight Mounting Bracket Kit

OMBK = Offset Mounting Bracket Kit

TOP MOUNTING OPTIONS



AMK = Adjustable Mounting Kit

45B = 45° Bracket

135B = 135° Bracket

DIMENSIONS

